

Caso Clínico

Case Report

Edson Marchiori¹
Taisa Davaus Gasparetto²
Dante L. Escuissato³
Gláucia Zanetti⁴

Padrão de *crazy-paving* na leptospirose pulmonar: Correlação entre a tomografia computadorizada de alta resolução e os achados anatomopatológicos

Leptospirosis of the lung presenting with crazy-paving pattern: Correlation between the high-resolution CT and pathological findings

Recebido para publicação/received for publication: 07.12.27
Aceite para publicação/accepted for publication: 08.07.24

Resumo

Os autores apresentam os aspectos na tomografia computadorizada de alta resolução de um doente com hemorragia pulmonar difusa por leptospirose. O achado predominante consistiu de opacidades em vidro despolido difusas, com espessamento de septos interlobulares sobrepostos, resultando no padrão de *crazy-paving*. O doente morreu, e na necrópsia foi observada extensa hemorragia alveolar, com sangue infiltrando os septos interlobulares. É realçada a correlação entre os

Abstract

The authors present the high-resolution CT findings of a patient with diffuse pulmonary hemorrhage due to leptospirosis. The main finding consisted of extensive ground-glass opacities superimposed on mild interlobular septal thickening, resulting in the appearance termed “crazy-paving”. The patient died and the necropsy showed extensive haemorrhage filling the air-space and blood infiltrating the interlobular sep-

¹ Professor Titular e Chefe do Departamento de Radiologia da Universidade Federal Fluminense (UFF). Coordenador Adjunto do Curso de Pós-Graduação em Radiologia da Universidade Federal do Rio de Janeiro (UFRJ) / Full Professor, Head, Department of Radiology of the University Fluminense (UFF). Associate Coordinator, Post-Graduate Course in Radiology, University of Rio de Janeiro (UFRJ).

² Médica Pós-Graduada do Departamento de Radiologia da UFF / Post-Graduate Doctor, Department of Radiology, UFF.

³ Professor Adjunto de Radiologia da Universidade Federal do Paraná, Curitiba, Brasil / Associate Professor of Radiology, University of Paraná, Brazil.

⁴ Doutoranda em Radiologia da UFRJ / PhD in Radiology, UFRJ.

Departamento de Radiologia da Universidade Federal do Paraná, Curitiba, Brasil. Director: Prof. Dante L. Escuissato. Rua General Carneiro, 181. CEP 80.000-000. Curitiba, Paraná, Brasil / Departments of Radiology of the University Fluminense (EM, TD) and University of Rio de Janeiro (EM, GZ), Rio de Janeiro, Brazil, and University of Paraná (DLE), Curitiba, Brazil

Departamento de Radiologia da Universidade Federal Fluminense (UFF) Director : Prof. Edson Marchiori
Av. Marquês do Paraná, 330. Centro. Niterói – Rio de Janeiro – Brasil

Serviço de Radiodiagnóstico do Hospital Universitário Clementino Fraga Filho (HUCFF), da Universidade Federal do Rio de Janeiro (UFRJ). Director: Prof. Hilton Koch
Av. Brigadeiro Trompowsky, s/n. Ilha do Fundão. Rio de Janeiro – Brasil.

Correspondência / Correspondence address:

Edson Marchiori – Rua Thomaz Cameron, 438. Valparaíso. CEP 25685.120
Petrópolis, Rio de Janeiro, Brasil
E-mail: edmarchiori@gmail.com

achados anatomopatológicos e na tomografia computadorizada de alta resolução.

Rev Port Pneumol 2008; XIV (6): 887-891

Palavras-chave: Leptospirose, hemorragia pulmonar, padrão de *crazy-paving*, tomografia computadorizada de alta resolução.

ta. The correlation between the high-resolution CT and pathological findings is emphasised.

Rev Port Pneumol 2008; XIV (6): 887-891

Key-words: Leptospirosis, pulmonary haemorrhage, crazy-paving pattern, high resolution CT.

Introduction

Leptospirosis is a zoonosis caused by *Leptospira interrogans*¹. Humans become infected when mucous membranes or abraded skin come into direct contact with the urine of infected animals, especially rats. The exposure to soil, water, or other matter contaminated with the infected urine is also commonly related as a cause of human infection by the *L. interrogans*^{1,2,3}.

Leptospirosis produces several clinical findings, but two presentations are usually seen. In the less severe and generally non-fatal form, often called anicteric leptospirosis, the illness commonly begins abruptly and presents with headache, myalgias, conjunctival suffusion, fever, nausea, vomiting, and meningismus. In addition to these features, the more severe form of leptospirosis, called icteric leptospirosis or Weill's disease, is commonly associated with jaundice, renal impairment, and major haemorrhagic complications¹. Pulmonary involvement is frequent, but often mild and of uncomplicated clinical significance. However, over the last two decades, an increasing number of cases with pulmonary haemorrhage as a prominent feature have been reported².

The diagnosis of leptospirosis is based on the clinical findings, exposure to infested animals in endemic areas, and positive serological tests³. Although the chest radiographic findings of this entity have been described, the high-resolution CT features of this infection were rarely demonstrated^{1,4}. In addition, the "crazy paving" pattern and the correlation of pathological and high-resolution CT findings were not previously described in patients with leptospirosis involving the lungs.

The authors aim to report a case of pulmonary haemorrhage secondary to leptospirosis, emphasising the presence of "crazy paving" pattern of the high-resolution CT, as well as the correlation between this finding and the pathological features.

Case report

A 31-year-old female patient presented with a five-days history of fever, rigors and severe calf and thigh pain. Two days before admission she began to expectorate small amounts of blood and became progressively breathless. The patient had a history of immersion in dirty water during a recent urban flood,

PADRÃO DE CRAZY-PAVING NA LEPTOSPIROSE PULMONAR: CORRELAÇÃO ENTRE A TOMOGRAFIA COMPUTADORIZADA DE ALTA RESOLUÇÃO E OS ACHADOS ANATOMOPATOLÓGICOS

Edson Marchiori, Taisa Davaus Gasparetto, Dante L. Escuissato, Gláucia Zanetti

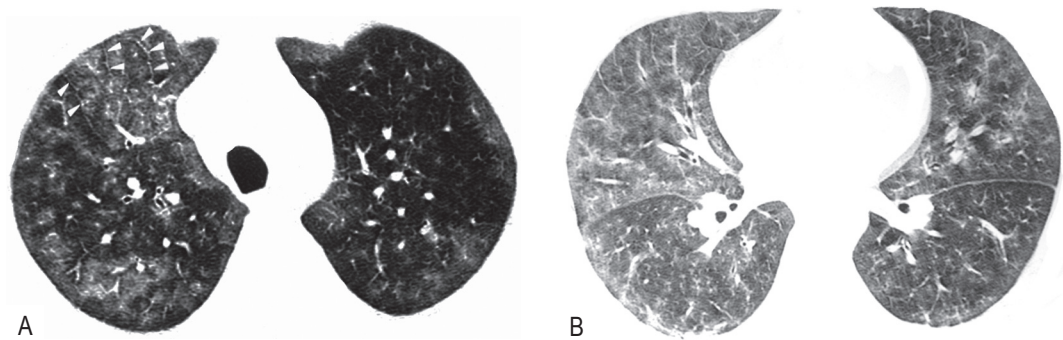


Fig. 1 – 31 year-old female patient with leptospirosis. High-resolution CT at the level of the aortic arch (A) and lower pulmonary veins (B) demonstrates bilateral areas of ground-glass attenuation with superimposed interlobular septal thickening (“crazy-paving” pattern)

and reported the presence of rodents in the surroundings of her home. On admission, she was febrile, dyspneic, and had cyanotic extremities.

Chest radiographs revealed extensive bilateral alveolar infiltrates in the lower thirds of lungs. High-resolution CT scan demonstrated diffuse ground-glass attenuation in both lungs, with superimposed mild interlobular septal thickening in the antero-superior regions (“crazy paving” pattern) (Fig. 1). Blood cultures demonstrated growing *L. interrogans* serovar *Copenhageni*, and treatment was initiated with intravenous benzil-

penicillin and hydrocortisone, associated with O₂ by a nasal catheter. The patient also required blood transfusion. Despite treatment, she developed worsening dyspnea and massive haemoptysis, requiring intubation and positive pressure ventilation. Two days after admission, she had a cardiac arrest and died despite reanimation attempts. The necropsy showed congestion and haemorrhage in the kidneys, liver, spleen and lungs. *Leptospiras* were found in the kidney's sections. In the lungs, petechiae were observed on the pleural surfaces, and the cut sections of the parenchyma were grossly

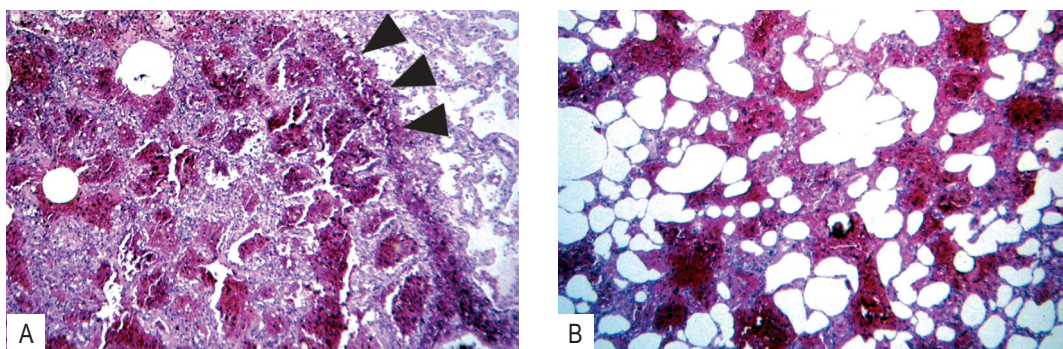


Fig. 2 – (A) Histological section of the lung shows diffuse filling of the air-spaces by blood and an interlobular septum thickened due to blood infiltration (arrows). In the right side there is a secondary pulmonary lobule normally aired (hematoxylin/eosin $\times 40$). (B) Histological section demonstrates the air-spaces partially filled by haemorrhage (hematoxylin/eosin $\times 40$)

haemorrhagic. Histologically, there was haemorrhage filling the air-spaces and infiltration of the interlobular septa by blood (Fig. 2).

Discussion

The patients with leptospirosis usually manifest two main clinical presentations. The milder anicteric form accounts for 90-95% of cases, and those patients commonly refer fever, myalgia, conjunctival suffusion and mild gastrointestinal upset. The other 5-10% of the patients presents the icteric form, also known as Weil's syndrome, which is characterised by jaundice, renal dysfunction, haemorrhagic manifestations, pulmonary involvement, and a high mortality rate². Our case presented with the latter form on the infection, with involvement of the lungs, kidneys, spleen and liver.

Im *et al.*⁵ described the chest radiographic findings in 58 patients with leptospirosis. The predominant abnormality consisted of poorly defined and diffuse ground-glass opacities, which were seen in 27% of cases. They postulated that this pattern was a result of pulmonary haemorrhage. Marchiori and Müller⁴ presented the high-resolution CT findings in a series of five patients with leptospirosis involving the lungs. All patients showed ground-glass opacities and four presented areas of air-space consolidation. The authors suggested that those findings were secondary to pulmonary hemorrhage, which was seen in bronchoalveolar lavage and autopsy studies. Although ground-glass opacities and air-space consolidations may be seen in patients with diffuse pulmonary haemorrhage, these findings are usually non-specific. The differential diagnosis should include cardiogenic and

non-cardiogenic pulmonary edema, as well as infectious pneumonia⁴.

The "crazy-paving" pattern is described in the high-resolution CT scan as areas of ground-glass attenuation with superimposed interlobular septal thickening. This pattern was initially described by Murch and Carr⁶ as pathognomonic of pulmonary alveolar proteinosis. Since then, several diseases, such as bronchioloalveolar carcinoma, sarcoidosis, nonspecific interstitial pneumonia, cryptogenic organising pneumonia and infectious diseases have demonstrated this finding, making the differential diagnosis by high-resolution CT sometimes difficult^{7,8}. To our knowledge, the "crazy-paving" pattern was not previously described in patients with leptospirosis.

The macroscopical study of the lungs of patients with leptospirosis generally demonstrates extensive pulmonary haemorrhage, with numerous foci of bleeding with different sizes^{9,10}. Some patients may show pleural-based lung lesions with pyramidal form, suggesting haemorrhagic infarcts^{9,10}. The histological sections usually demonstrate pulmonary congestion, several foci of interstitial and intra-alveolar bleeding, and pulmonary oedema, with different degrees of severity^{3,9,10}. In the present case, the histological examination demonstrated haemorrhage filling the air-spaces, which were seen as areas of ground-glass attenuation on the high-resolution CT, and infiltration of the interlobular septa by blood, justifying the interlobular septal thickening seen on the CT scan.

In conclusion, leptospirosis should be included in the differential diagnosis of lung lesions presenting with "crazy-paving" pattern on the high-resolution CT, particularly in patients with suggestive epidemiological

history. In addition, the study of the histological sections of our case demonstrated that the areas of ground-glass attenuation are related to the filling of the air-spaces by haemorrhage and the interlobular septal thickening is secondary to infiltration of those septa by blood.

Bibliography

1. Luks AM, Lakshminarayanan S, Hirschmann JV. Leptospirosis presenting as diffuse alveolar hemorrhage: case report and literature review. *Chest* 2003; 123(2):639-43.
2. Arokianathan D, Trower K, Pooboni S, Sosnowski A, Moss P, Thaker H. Leptospirosis: a case report of a patient with pulmonary haemorrhage successfully managed with extra corporeal membrane oxygenation. *J Infect* 2005;50(2):158-62.
3. Carvalho JE, Marchiori ES, Guedes e Silva JB, Souza Netto BA, Tavares W, Paula AV. Pulmonary compromise in leptospirosis. *Rev Soc Bras Med Trop* 1992; 25(4): 21-30.
4. Marchiori E, Muller NL. Leptospirosis of the lung: high-resolution computed tomography findings in five patients. *J Thorac Imaging* 2002;17(2):151-153.
5. Im JG, Yeon KM, Han MC, Kim CW, Webb WR, Lee JS, *et al.* Leptospirosis of the lung: radiographic findings in 58 patients. *AJR* 1989; 152(5):955-9.
6. Murch CR, Carr DH. Computed tomography appearances of pulmonary alveolar proteinosis. *Clin Radiol* 1989; 40(3):240-3.
7. Johkoh T, Itoh H, Müller NL, Ichikado K, Nakamura H, Ikezoe J, *et al.* Crazy paving appearance at thin-section CT: spectrum of disease and pathologic findings. *Radiology* 1999; 211(1):155-60.
8. Murayama S, Murakami J, Yabuuchi H, Soeda H, Masuda K. Crazy paving appearance on high resolution CT in various diseases. *J Comput Assist Tomogr* 1999; 23(5): 749-52.
9. Nicodemo AC, Duarte MI, Alves V, Takakura CFH, Santos RTM, Nicodemo EL. Lung lesions in human leptospirosis: microscopic, immunohistochemical, and ultrastructural features related to thrombocytopenia. *Am J Trop Med Hyg* 1997; 56(2):181-7.
10. Arean VM. The pathologic anatomy and pathogenesis of fatal human leptospirosis (Weil's disease). *Am J Pathol* 1962;40: 393-423.